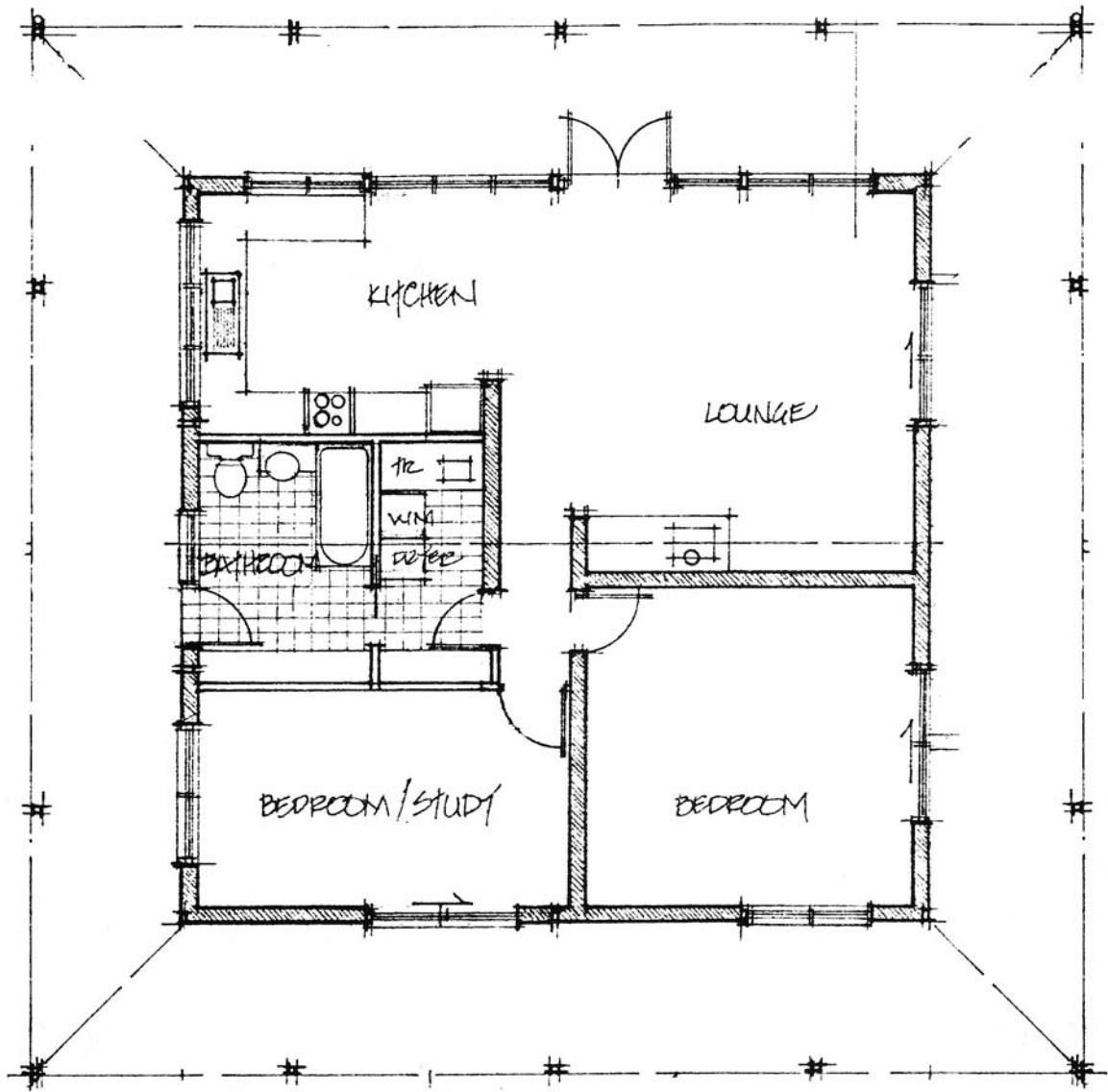


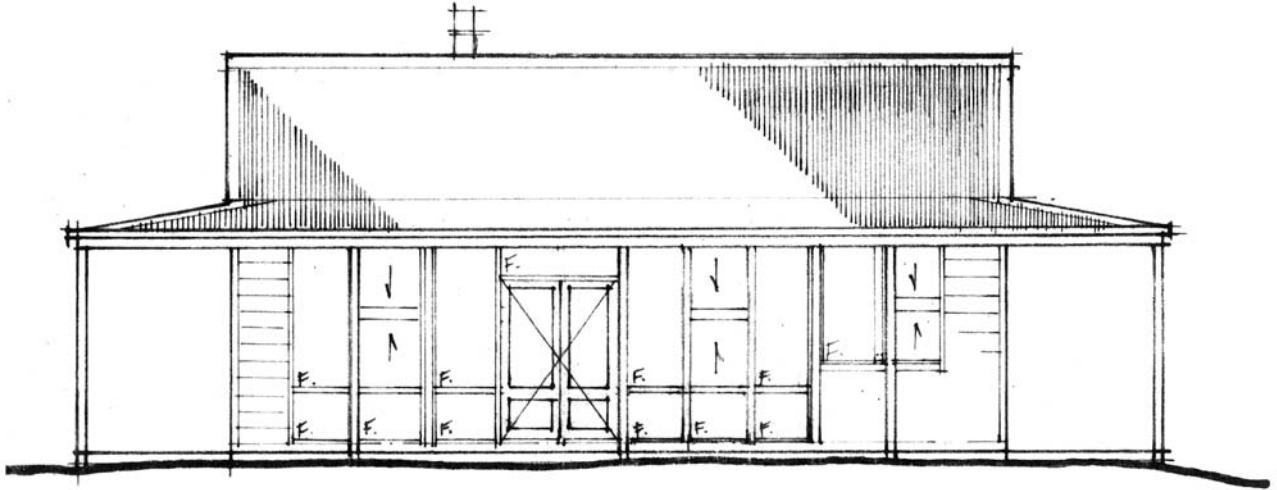
CROWN ALLOTMENT 1560B  
 PARISH OF MORLANDING  
 COUNTY DALHOUSIE  
 38.40 HA

**SITE PLAN** 1:5000

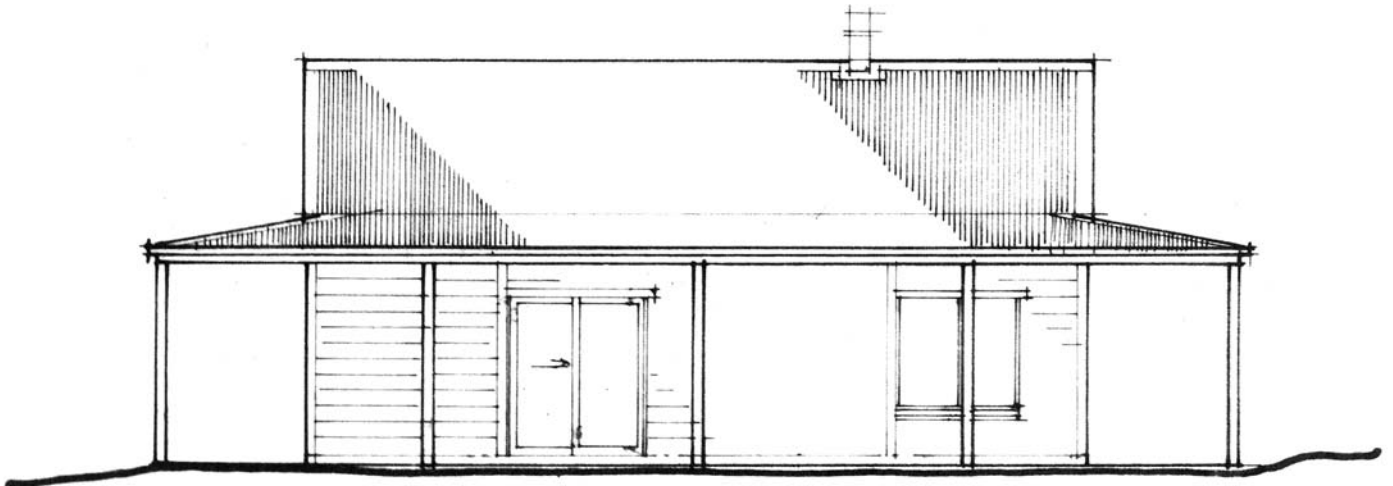
**PROPOSED MUDBRICK HOUSE**  
**FOR L. BORRETT**  
**AT GLENAROUA (VIA KILMORE)**

MARCUS WARD - ARCHITECT  
 46 PIPER STREET, KINETON 3444  
 PH. 054 222-529  
 MAY 1989

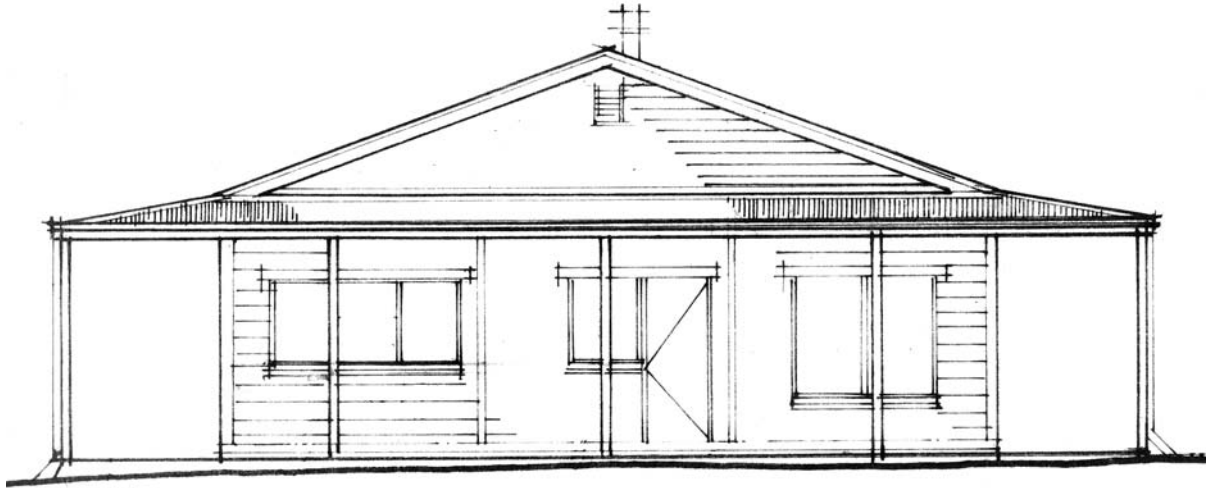




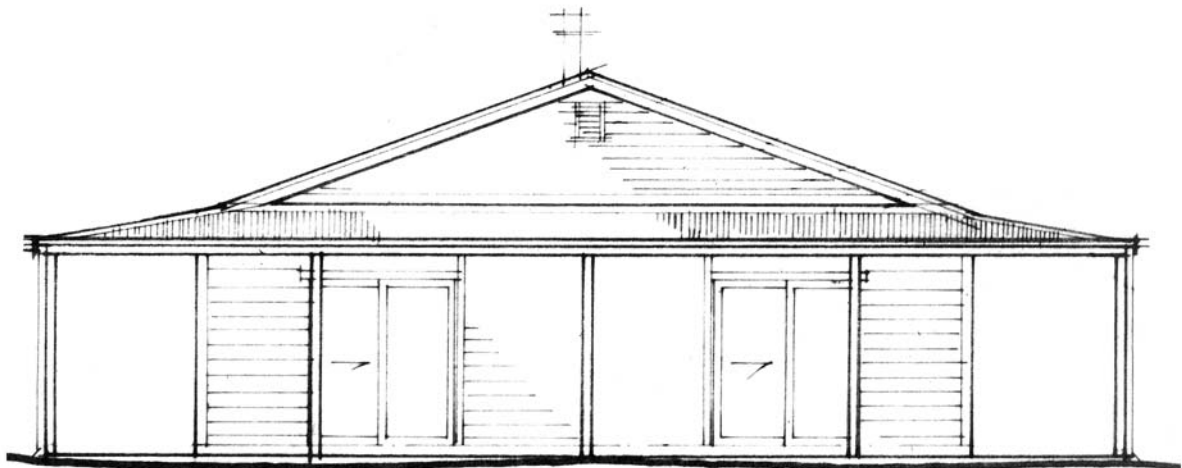
NORTH ELEVATION



SOUTH ELEVATION



WEST ELEVATION



EAST ELEVATION